

SINCE 1908
wessels
 company

SUBMITTAL

AP-SERIES

CAST IRON AIR PURGERS

Models: AP-101 thru AP-103

Submittal Sheet No. D-1101A

Date: 4/16

Job Name _____	Submitted By _____	Date _____
Location _____	Approved By _____	Date _____
_____	Order No. _____	Date _____
Engineer _____	Notes _____	_____
Contractor _____	_____	_____
Sales Rep. _____	_____	_____

Description

Wessels In-Line Air Purgers are used for commercial and industrial hydronic systems to effectively control and eliminate entrained air. The purger is designed with an embossed flow indicator arrow for proper installation.

Construction

Shell: Cast Iron

Performance Limitations

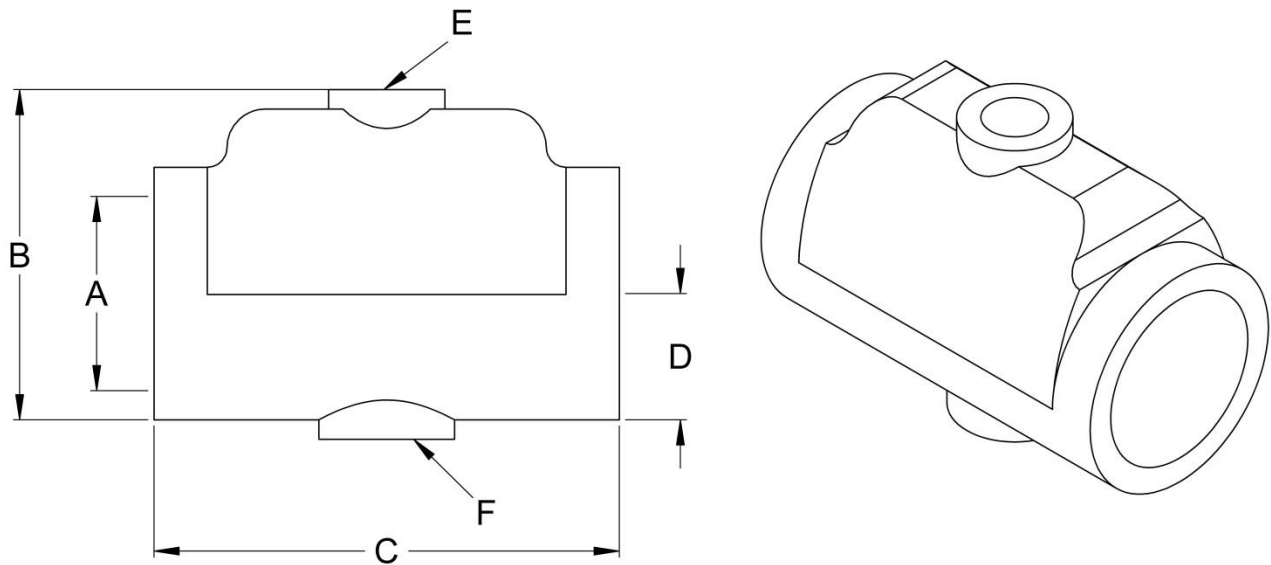
Maximum Design Temperature: 450°F
 Maximum Design Pressure: 150 PSIG

Model Number	Part Number	Max Flow (GPM)	Tagging Information	Quantity
AP-101	75010443	25		
AP-101.25	75010444	35		
AP-101.5	75010445	45		
AP-102	75010446	56		
AP-102.5	75010447	90		
AP-103	75010448	190		

Typical Specification

Furnish and install, as shown on plans, an In-Line Air Purger Model AP- _____ as supplied by Wessels Company. The purger shall incorporate an air divergence scoop to facilitate the separation of entrained system air.

Each air purger shall be Wessels model number AP- _____ or approved equal.



AP-101 thru AP-103

Dimensions & Weights

Model	Dimensions in Inches						Shipping Weight (lbs)
	Dimensions				Tappings		
	A	B	C	D	E	F	
AP-101	1	4	6	2 1/2	1/8	1/2	7
AP-101.25	1 1/4						7
AP-101.5	1 1/2	8 1/2					
AP-102	2	4 7/8	8	3 3/8	1/2		8
AP-102.5	2 1/2	6.5	10	4 7/8	3/4		23
AP-103	3						21