

SINCE 1908
wessels
 company

SUBMITTAL

SS-SPA-SERIES

SEVERE SERVICE AIR SEPARATOR

Models: SS-SPA-2 thru SS-SPA-24

Submittal Sheet No. H-1002A

Date: 4/16

Job Name _____	Submitted By _____	Date _____
Location _____	Approved By _____	Date _____
_____	Order No. _____	Date _____
Engineer _____	Notes _____	
Contractor _____	_____	
Sales Rep. _____	_____	

Description

Wessels Severe Service SPA ASME Vortex type Air Separators are designed for systems that require more corrosive resistance than standard carbon steel. SPA separators eliminate air quickly and efficiently from open and closed loop heating/cooling systems. Water enters and exits through unique "tangential" connections, which promote a low velocity swirling effect in the center of the unit. Natural centrifugal forces allow the heavier air-free water to move toward the outer edges while entrained air is captured within the "eye" of the vortex and released out of the top of the separator. The bubble-free water then exits near the bottom of the unit, protecting the systems against the noise, corrosion, and damage commonly caused by entrained air.

Construction

Shell: NSF61 304 Stainless Steel*
 Heads: NSF61 304 Stainless Steel*

*NSF61 316L Stainless Steel Available

Performance Limitations

Maximum Design Temperature: 450°F Maximum Design Pressure: 125 PSIG**

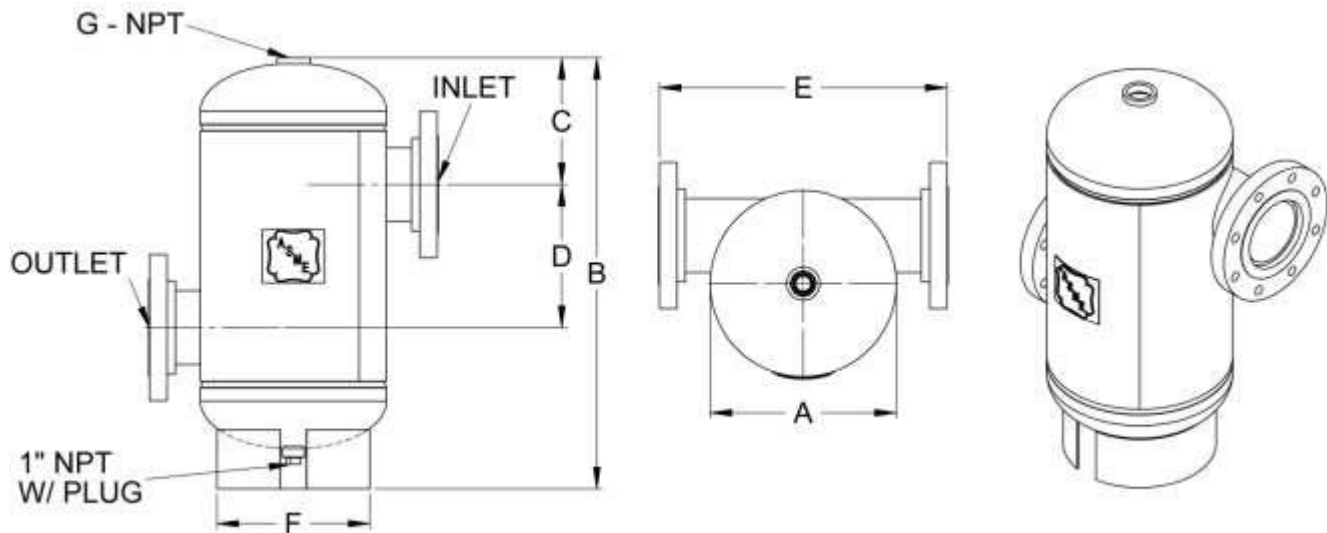
**200 & 250 PSIG available

Model Number	Part Number	Max Flow (GPM)	Tagging Information	Quantity
SS-SPA-2	72050020	56		
SS-SPA-2.5	72050025	90		
SS-SPA-3	72050030	190		
SS-SPA-4	72050040	300		
SS-SPA-5	72050050	530		
SS-SPA-6	72050060	850		
SS-SPA-8	72050080	1900		
SS-SPA-10	72050100	3200		
SS-SPA-12	72050120	4800		
SS-SPA-14	72050140	6100		
SS-SPA-16	72050160	8000		
SS-SPA-18	72050180	9700		
SS-SPA-20	72050200	12000		
SS-SPA-22	72050220	15000		
SS-SPA-24	72050240	17000		

Typical Specification

Furnish and install, as shown on plans, a NSF61 listed 304 stainless steel vortex type air separator model SS-SPA_____sized for _____GPM, with _____" (NPT/Flanged) tangential connections, as manufactured by Wessels Company. A blowdown connection shall be provided to facilitate routine cleaning of the unit. The tank must be constructed in accordance with most recent addendum of Section VIII Division 1 of the ASME Boiler and Pressure Vessel Code, and shall be constructed and stamped for 125 PSI working pressure @ 450°F.

Each air separator shall be Wessels model number SS-SPA-_____or approved equal.



SS-SPA-2 thru SS-SPA-24

Dimensions & Weights

Model Number	Dimensions in Inches								Approx. Shipping Wt (lbs.)
	Conn. Size	A	B	C	D	E	F	G	
SS-SPA-2	2 NPT	12	22 1/2	6 1/4	8 1/2	16 5/8	9 1/2	1 1/4	73
SS-SPA-2.5	2.5 NPT		24 1/8	5 1/2					75
SS-SPA-3	3		23 1/2	6 1/4	8	19 3/4			95
SS-SPA-4	4	14	32	9 1/8	10 3/4	21 3/4	11 1/2	1 1/2	122
SS-SPA-5	5								138
SS-SPA-6	6	20	44	13 1/4	14 1/2	28	18	2	222
SS-SPA-8	8								259
SS-SPA-10	10	30	60 1/2	19	20	41	24	2	556
SS-SPA-12	12								627
SS-SPA-14	14	36	78	22	31 1/2	46 3/8	30	2	882
SS-SPA-16	16	48	108	30	40	60	38		1906
SS-SPA-18	18	54	124	33	50	66	44	2555	
SS-SPA-20	20	60	138	35	60	72	50	2633	
SS-SPA-22	22	66	150	38	66	78	56	2	3831
SS-SPA-24	24	66				80			4130

Notes

- Available with mounting clips.
- Flanged connection is standard unless otherwise specified.